

CITY OF TORONTO  
CHILDCARE CENTRE  
118 ENDERBY ROAD

TORONTO

ONTARIO



Architects

Carruthers Shaw  
and Partners Limited  
Architects

# GARBAGE ENCLOSURE

Scale:  
1:50

Date:  
09 MARCH 05

Project No.

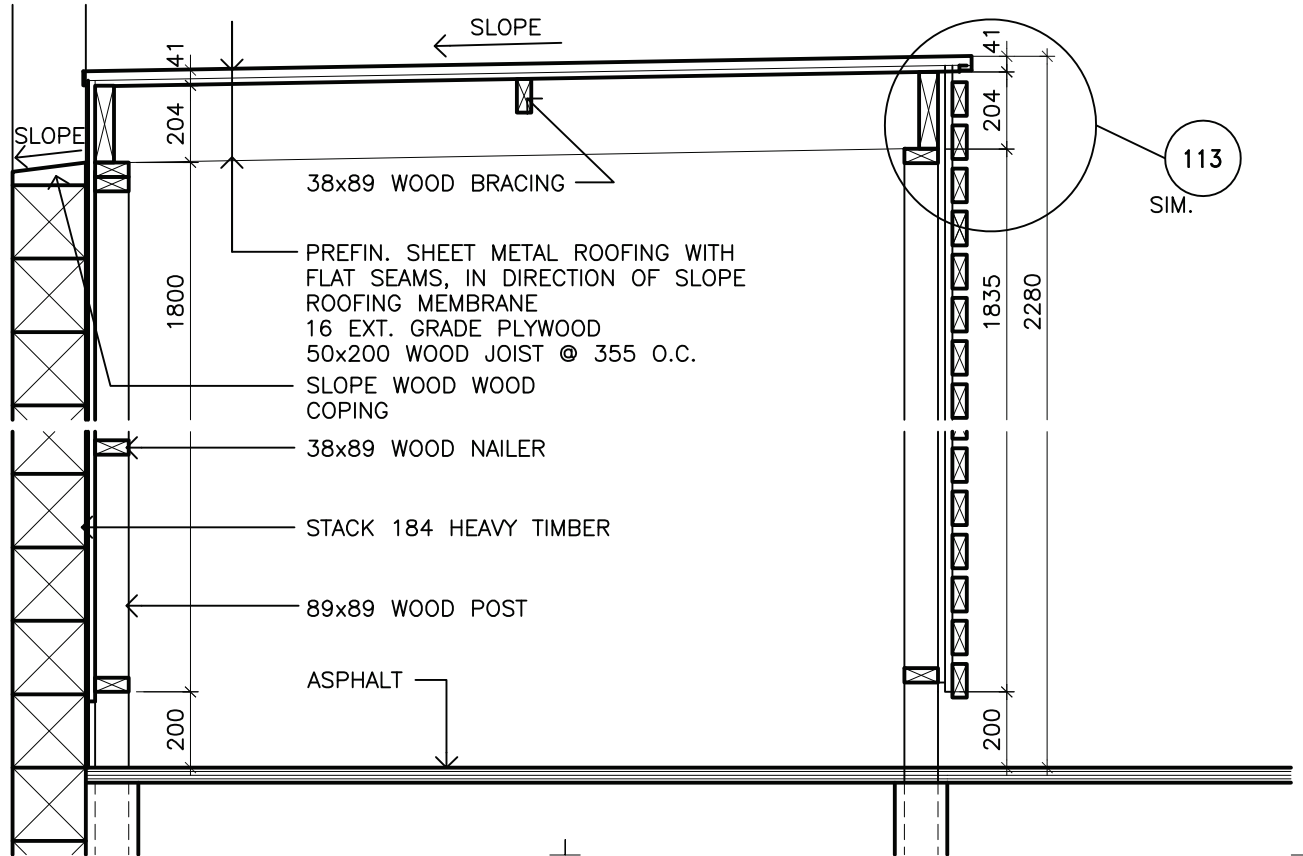
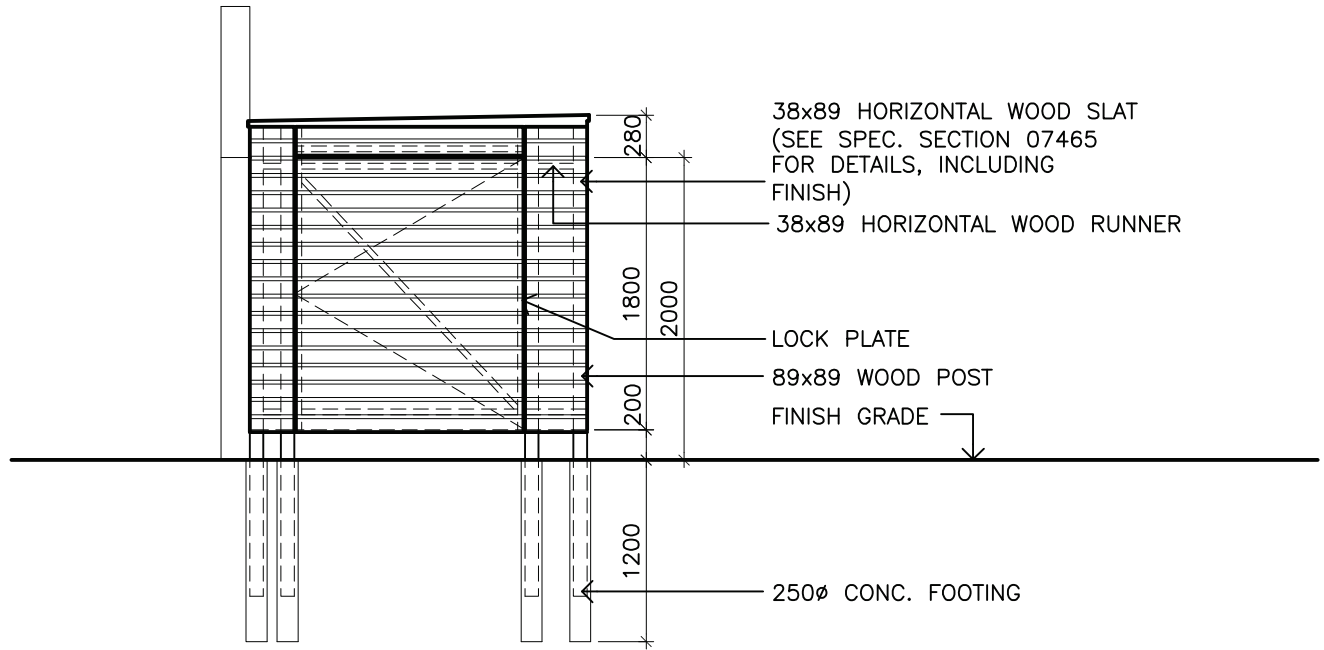
03056

Drawn by:  
DAT

Revision:

Drawing No.

104



CITY OF TORONTO  
CHILDCARE CENTRE  
118 ENDERBY ROAD

TORONTO

ONTARIO



Architects

Carruthers Shaw  
and Partners Limited  
Architects

GARBAGE ENCLOSURE  
ELEVATION AND SECTION

Scale:  
1:50

Date:  
09 MARCH 05

Project No.

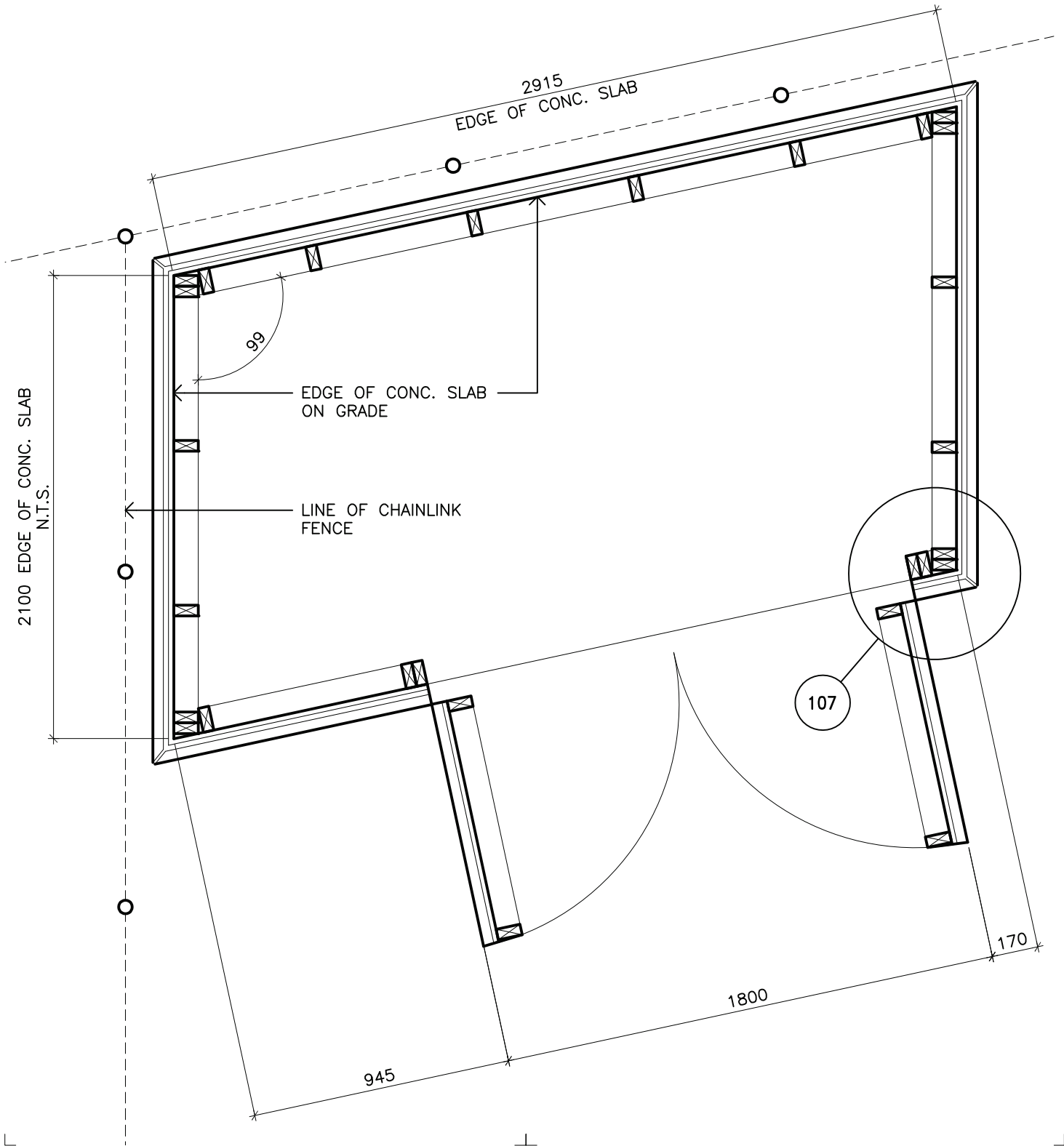
03056

Drawn by:  
DAT

Revision:

Drawing No.

105



CITY OF TORONTO  
CHILDCARE CENTRE  
118 ENDERBY ROAD

TORONTO

ONTARIO



Architects

Carruthers Shaw  
and Partners Limited  
Architects

STORAGE PLAN

Scale:  
1:20

Date:  
09 MARCH 05

Project No.

03056

Drawn by:  
DAT

Revision:

Drawing No.

106

WOOD STUDS ANCHORED  
TO CONC. SLAB ON GRADE  
PROVIDE CONT. FOAM  
GASKET UNDER SILL PLATE

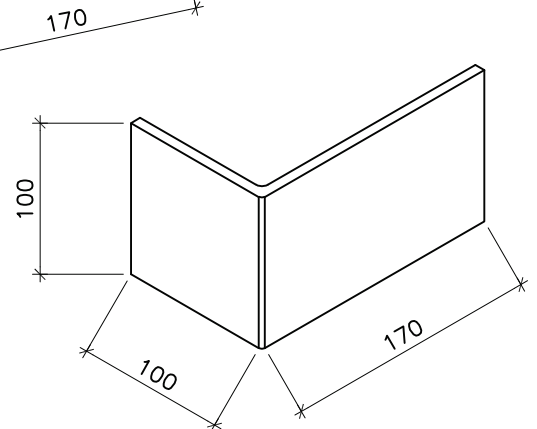
LINE OF CONC. SLAB ON GRADE

38x89 WOOD STUDS @ 600 O.C.  
19 EXT. GR. PLYWOOD

38x89 SOLID CEDAR SLATS  
19x19 CONT. SOLID CEDAR  
VERTICAL SPACER @ 600 O.C.  
FASTENED THROUGH TO  
WOOD STUD FRAMING  
NOTE: POSITION OF VERTICAL  
SPACERS TO BE CO-ORDINATED  
WITH LOCATION OF WOOD STUDS  
REFER TO SPEC SECTION-07465  
WOOD CLADDING FOR FINISH

MITER CORNER

6x100X170 BENT PLATE  
3 REQUIRED FOR EACH DOOR  
AND JAMB



FILENAME:P:\03056\CADD\DET\0356d107.dwg

DRAWING LAST EDITED: 13MAR05 14:27:19

CITY OF TORONTO  
CHILDCARE CENTRE  
118 ENDERBY ROAD

TORONTO

ONTARIO



Carruthers Shaw  
and Partners Limited  
Architects

JAMB DETAIL  
AT STORAGE

Scale:  
1:20

Date:  
09 MARCH 05

Project No.

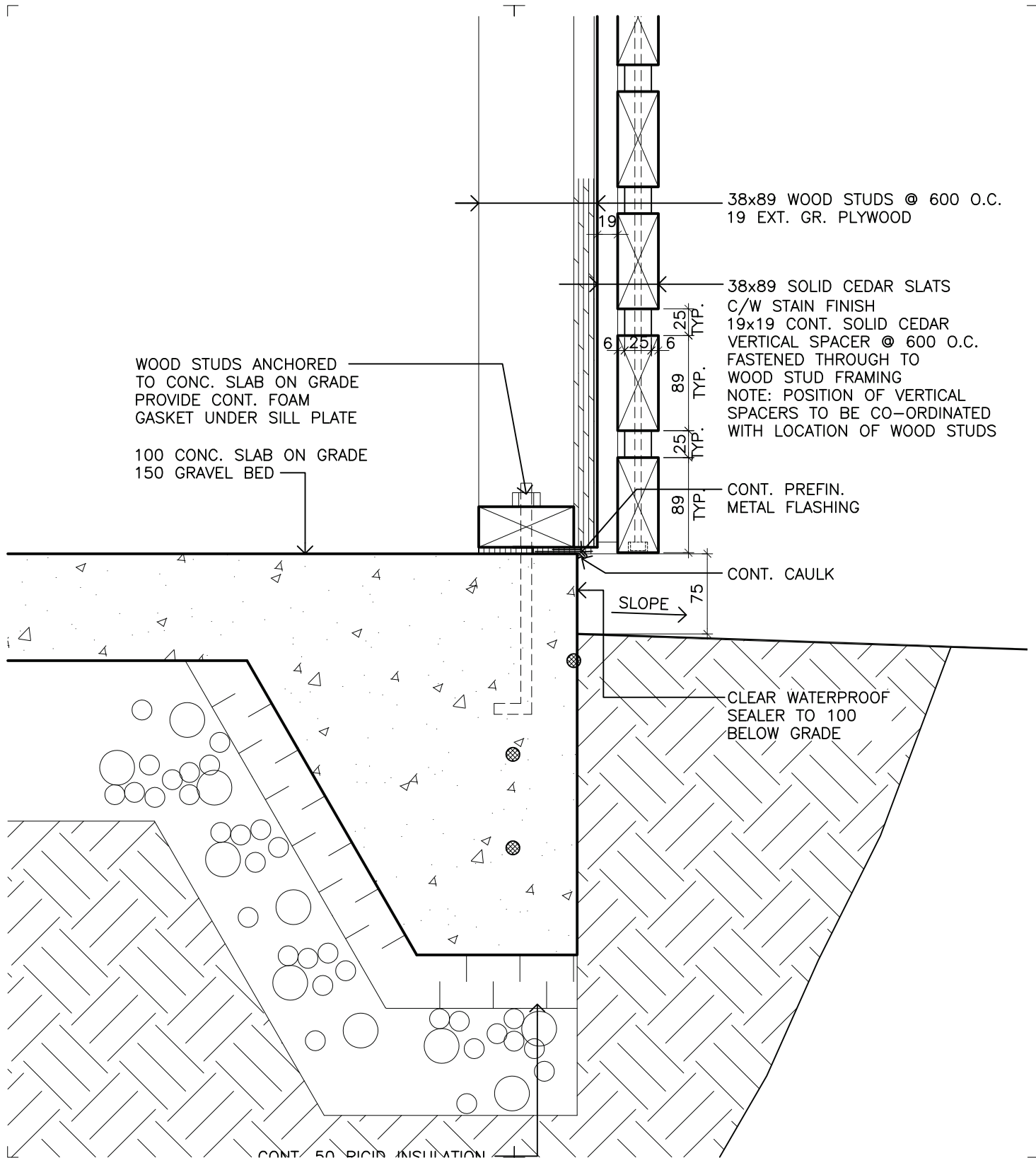
03056

Drawn by:  
DAT

Revision:

Drawing No.

107



CITY OF TORONTO  
CHILDCARE CENTRE  
118 ENDERBY ROAD

TORONTO

ONTARIO



Architects

Carruthers Shaw  
and Partners Limited  
Architects

STORAGE SHED  
SECTION DETAIL  
@ GRADE

Scale:

1:5

Date:

09 MARCH 05

Project No.

03056

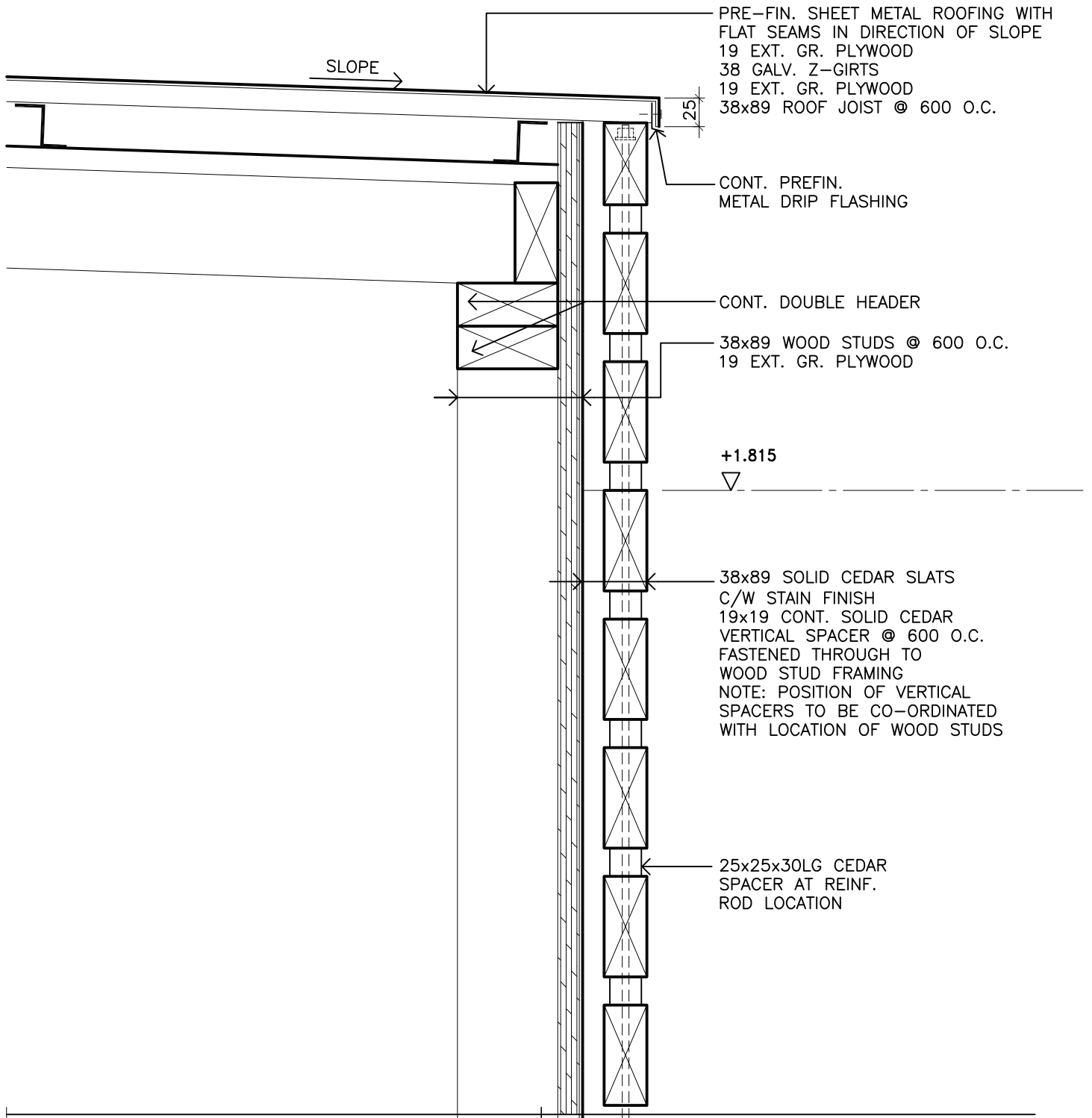
Drawn by:

DAT

Revision:

Drawing No.

112



CITY OF TORONTO  
CHILDCARE CENTRE  
118 ENDERBY ROAD

TORONTO

ONTARIO



Architects

Carruthers Shaw  
and Partners Limited  
Architects

STORAGE SHED  
SECTION DETAIL

Scale:

1:5

Date:

09 MARCH 05

Project No.

03056

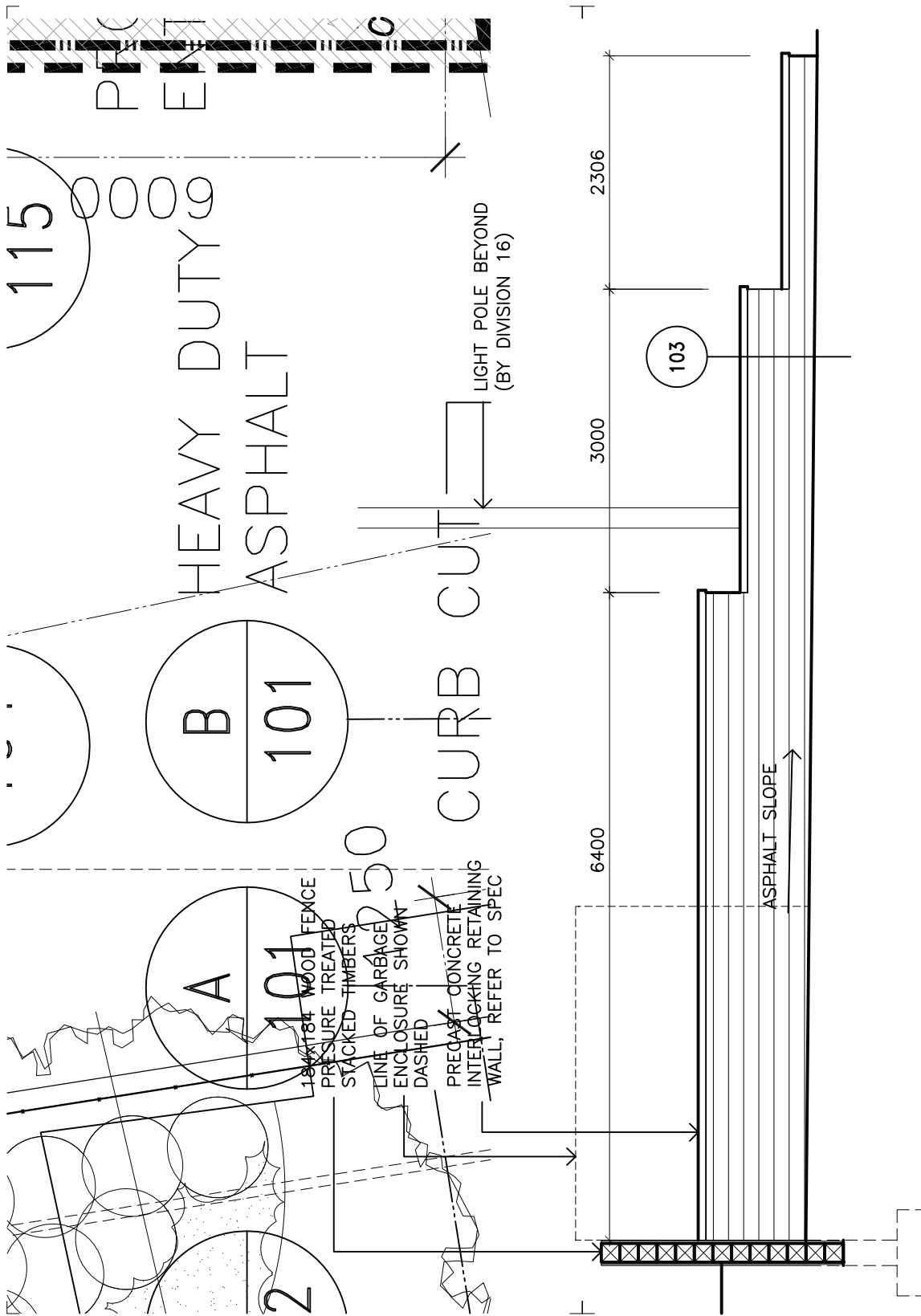
Drawn by:

DAT

Revision:

Drawing No.

113



CITY OF TORONTO  
CHILD CARE CENTRE  
118 ENDERBY ROAD

TORONTO

ONTARIO



## Architects

Carruthers Shaw  
and Partners Limited  
Architects

### RETAINING WALL ELEVATION

Scale:  
1:50

Date:

09 MARCH 05

Project No.

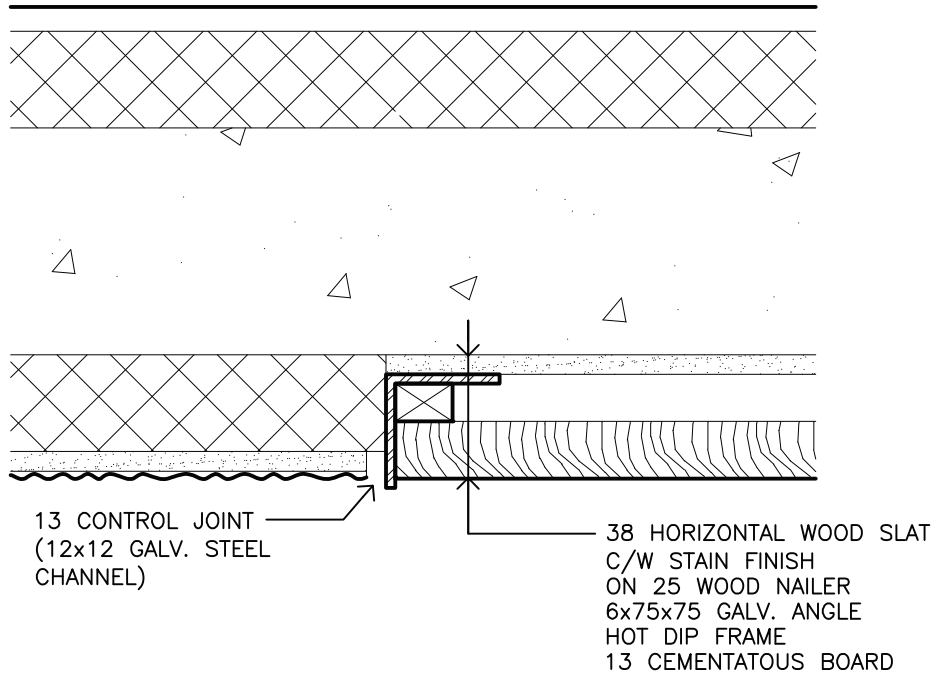
03056

Drawn by:  
**DAT**

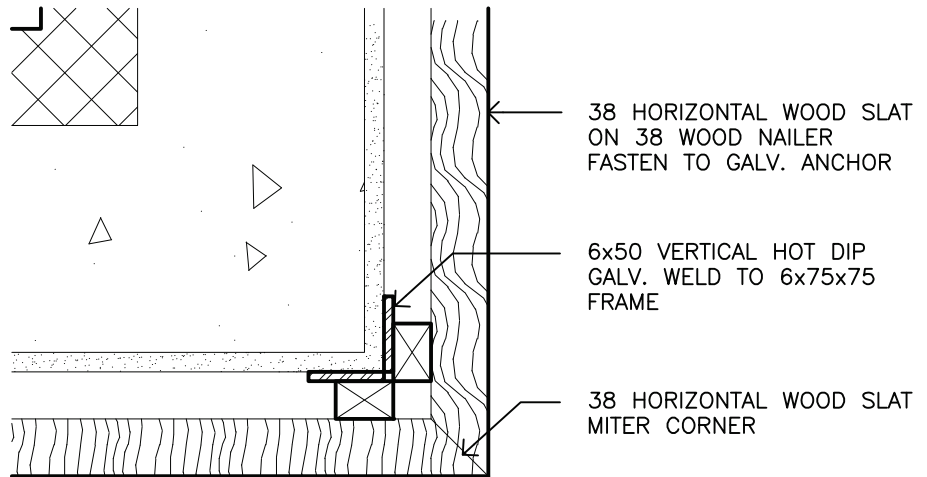
Revision:

Drawing No.

114



1 WOOD SLAT DETAIL AT JAMB



2 WOOD SLAT DETAIL AT CORNER

CITY OF TORONTO  
CHILDCARE CENTRE  
118 ENDERBY ROAD

TORONTO

ONTARIO



Architects

Carruthers Shaw  
and Partners Limited  
Architects

EDGE AND CORNER  
WOOD SLAT DETAIL

Scale:

1:2

Date:

09 MARCH 05

Project No.

03056

Drawn by:

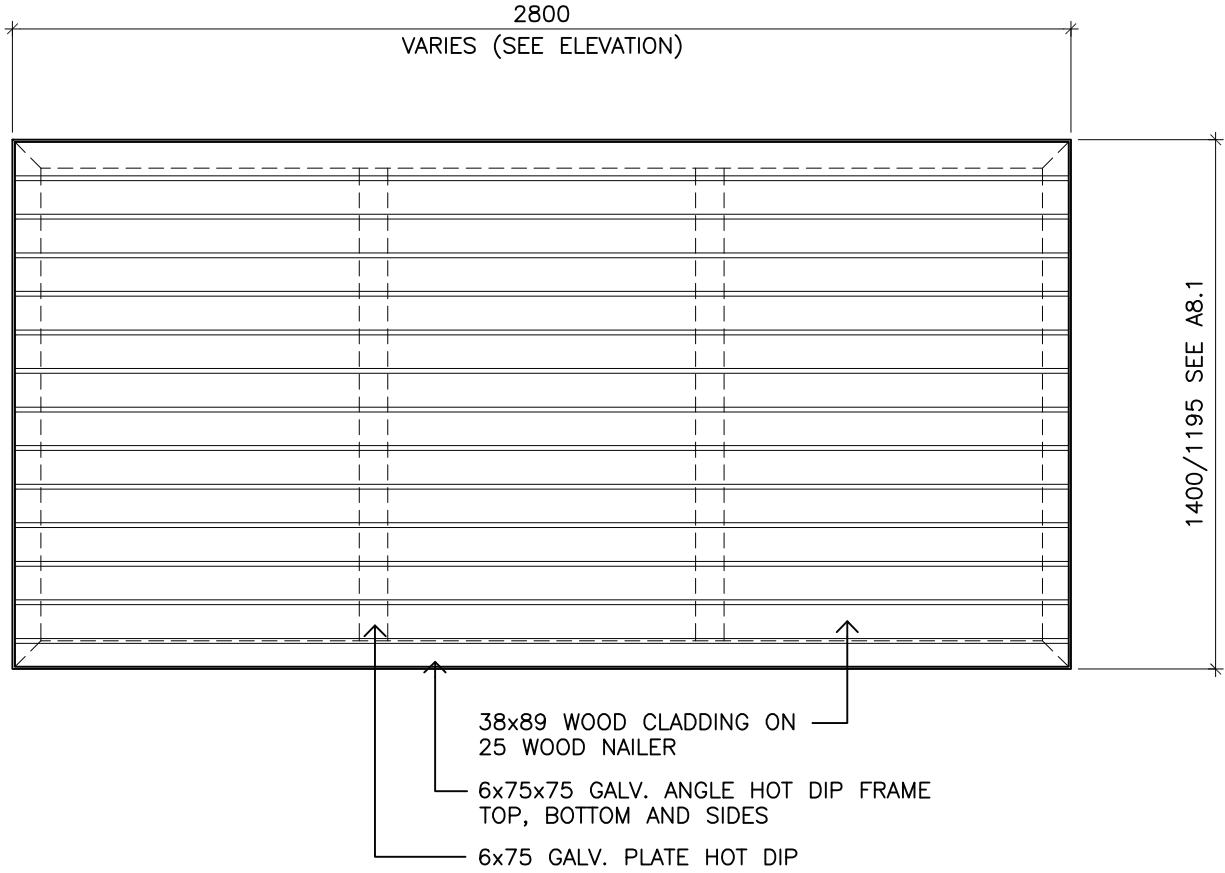
DAT

Revision:

Drawing No.

212





CITY OF TORONTO  
CHILDCARE CENTRE  
118 ENDERBY ROAD

TORONTO

ONTARIO



Architects

Carruthers Shaw  
and Partners Limited  
Architects

# WOOD CLADDING PANEL

Scale:  
1:20

Date:  
09 MARCH 05  
Project No.

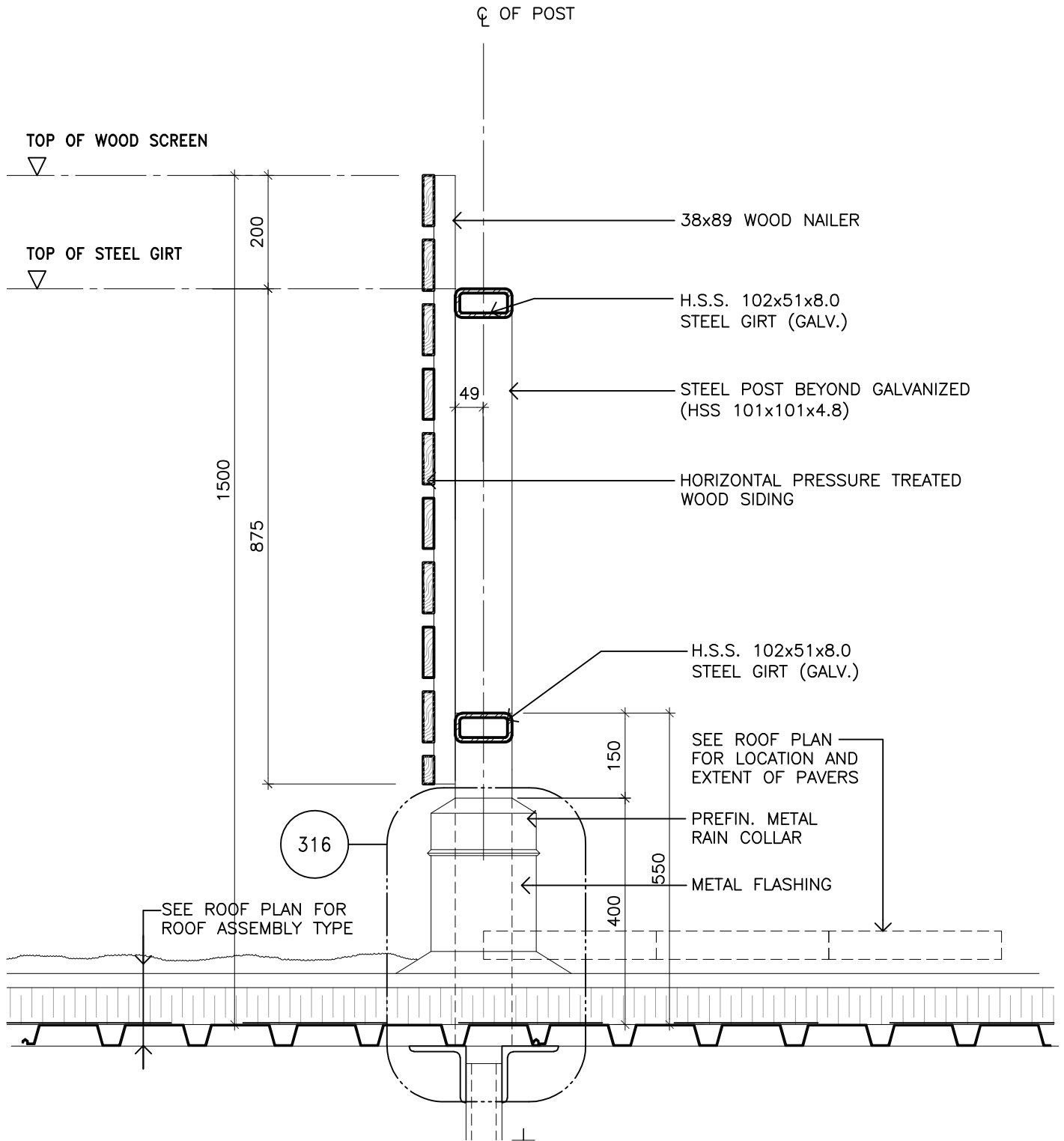
03056

Drawn by:  
DAT

Revision:

Drawing No.

213



CITY OF TORONTO  
CHILD CARE CENTRE  
118 ENDERBY ROAD

TORONTO

ONTARIO



Architects

Carruthers Shaw  
and Partners Limited  
Architects

# ROOF TOP UNIT SCREEN

Scale:  
1:10

Date:  
09 MARCH 05

Project No.

03056

Drawn by:  
DAT

Revision:

Drawing No.

315